



Marti Close Melksham SN12 7JA

- Three spacious bedrooms
- Generous lounge/diner
 - Enclosed rear garden
- Terraced house in Melksham
 - Bus stops nearby
- Newly fitted bathroom
- Driveway for two cars
- Pedestrian door to garage
- Close to parks and schools
- Shops and pubs closeby

Asking Price £245,000 Freehold



Porch

4'2" x 4'11"

External door to side, window to front elevation, radiator and door to hallway.

Hallway

11'5" x 5'1"

Radiator, stairs to first floor with space under, door to lounge/diner.

Lounge/Diner

23'0" x 12'6"

Window to front elevation, two radiators, sliding door to rear elevation and door to kitchen.

Kitchen

11'4" x 9'0"

Fitted with a matching range of base and eye level units with worktop space over, stainless steel sink, space for American style fridge/freezer, washing machine and cooker, window and external door to rear elevation.



Landing

8'6" x 7'0"

Airing cupboard and doors to bedrooms and bathroom.

Bedroom One

11'4" x 10'7"

Window to rear elevation and radiator.

Bedroom Two

11'6" x 9'7"

Window to front elevation and radiator.

Bedroom Three

8'5" x 8'1"

Window to front elevation and radiator.

Bathroom

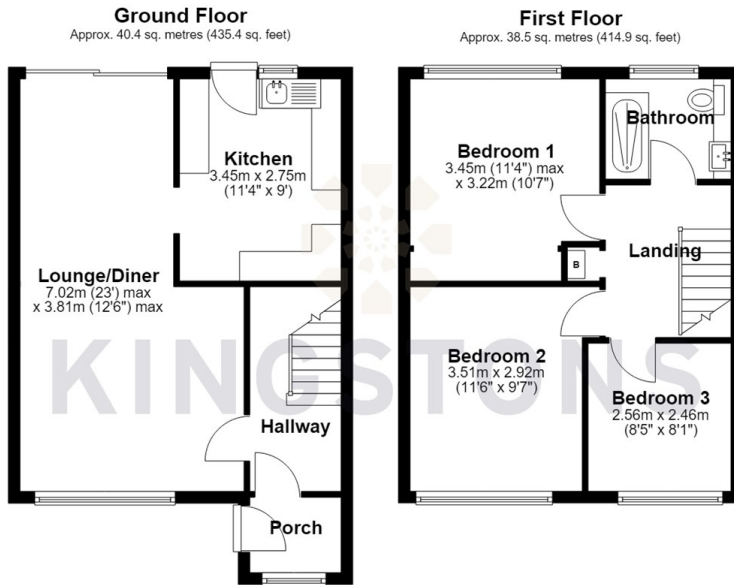
Fitted with three piece suite with comprising shower enclosure, storage with WC and wash hand basin, window to rear elevation and heated towel rail.

Outside

Driveway parking for two vehicles, enclosed rear garden with pedestrian door into garage.



Local Authority **Wiltshire**
Council Tax Band **B**
EPC Rating



Total area: approx. 79.0 sq. metres (850.2 sq. feet)




KINGSTONS
Melksham Office

11 High Street, Melksham,
Wiltshire, SN12 6JR

Contact

01225709115
sales@kingstons.biz
www.kingstons.biz

Agents Note: Whilst every care has been taken to prepare these particulars, they are for guidance purposes only. All measurements are approximate and for general guidance purposes only and whilst every care has been taken to ensure accuracy, they should not be relied upon and potential buyers/tenants are advised to recheck the measurements.